

**Product name: Thule Inside Out Lock G2**

**Picture:**

- horizontal installation:



*outer part*



*inner part*

- vertical installation:



*outer part*



*inner part*

**Description:**

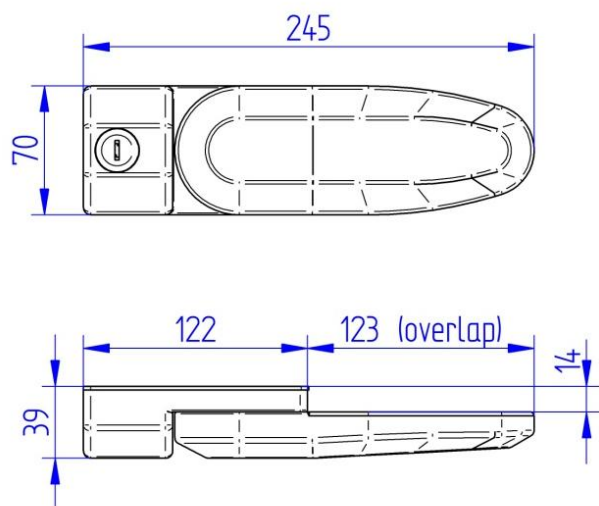
- High security lock for motorhome and caravan.
- Secures the entrance door both inside and outside.
- Lockable from both inside and outside but can always be opened from inside.
- To be mounted through the wall.
- Limited space required for installation.
- Can be installed horizontally or vertically for most optimal orientation of inner part.
- Large overlap with door for high security.

**Specs:**

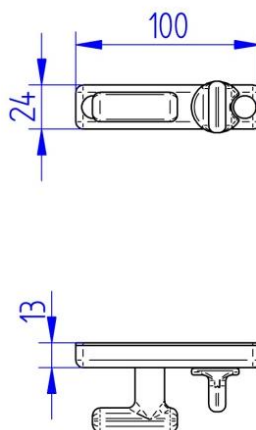
- Solid powder coated aluminum
- Color outer part: white
- Color inner part: silver grey
- Net weight: 0.940kg
- Gross weight: 1.085kg (incl. packaging)
- Maximum wall thickness: 45mm

**Technical Info / Drawings:**

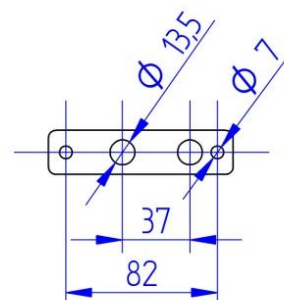
outer part



inner part



drilling pattern



Bolt length (mm)	Wall thickness (mm)	
	min	max
40 & 50	25	30
45 & 55 (*)	30	35
50 & 60	35	40
55 & 65	40	45

(\*) std. included in the set

**Article numbers / Variants:**

307339

Thule Inside Out Lock G2

**Available from:** November 2014

**Price:** See price list 2015

**VPE:** per 4 pieces